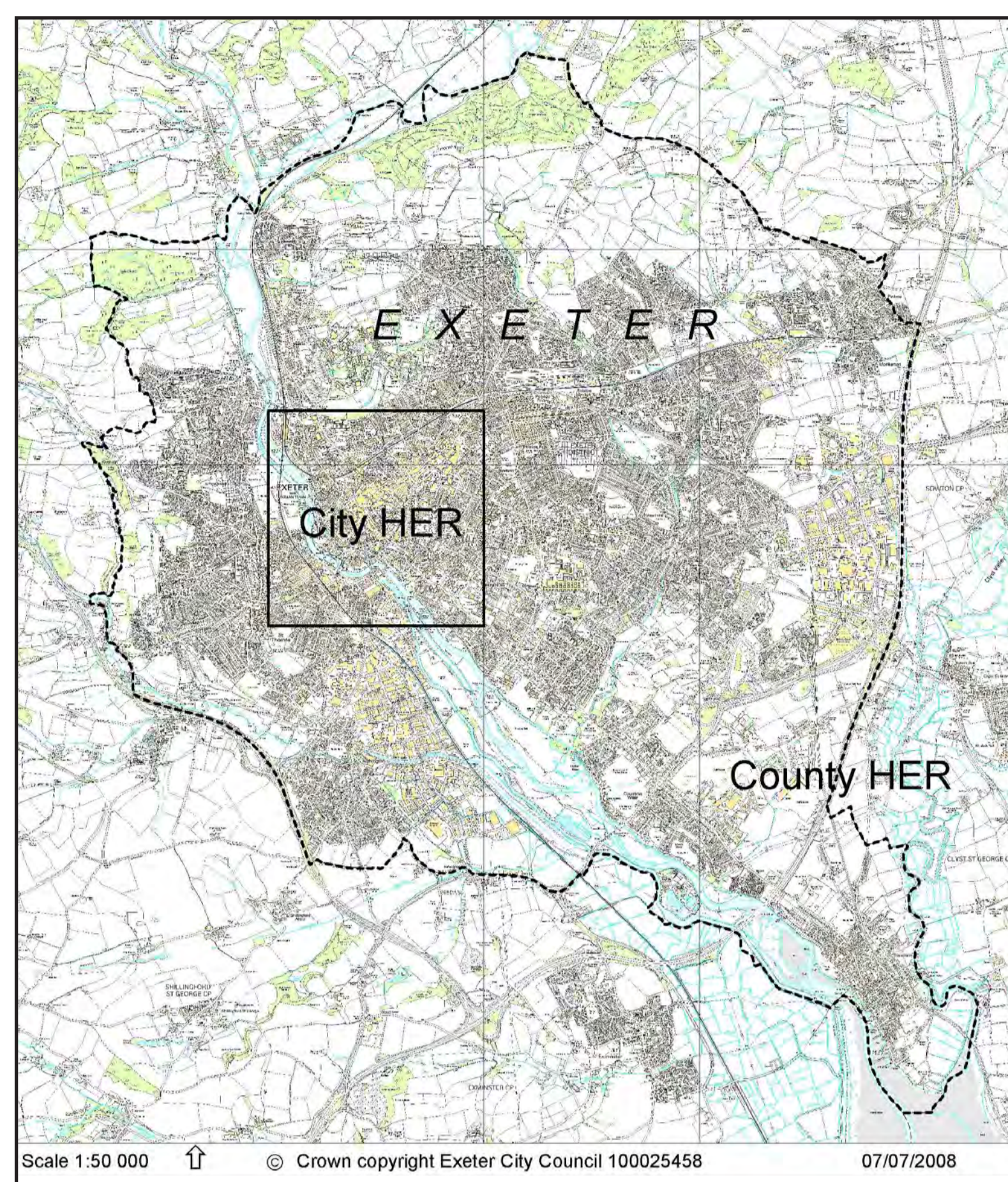


# EXETER CITY HISTORIC ENVIRONMENT RECORD - HER

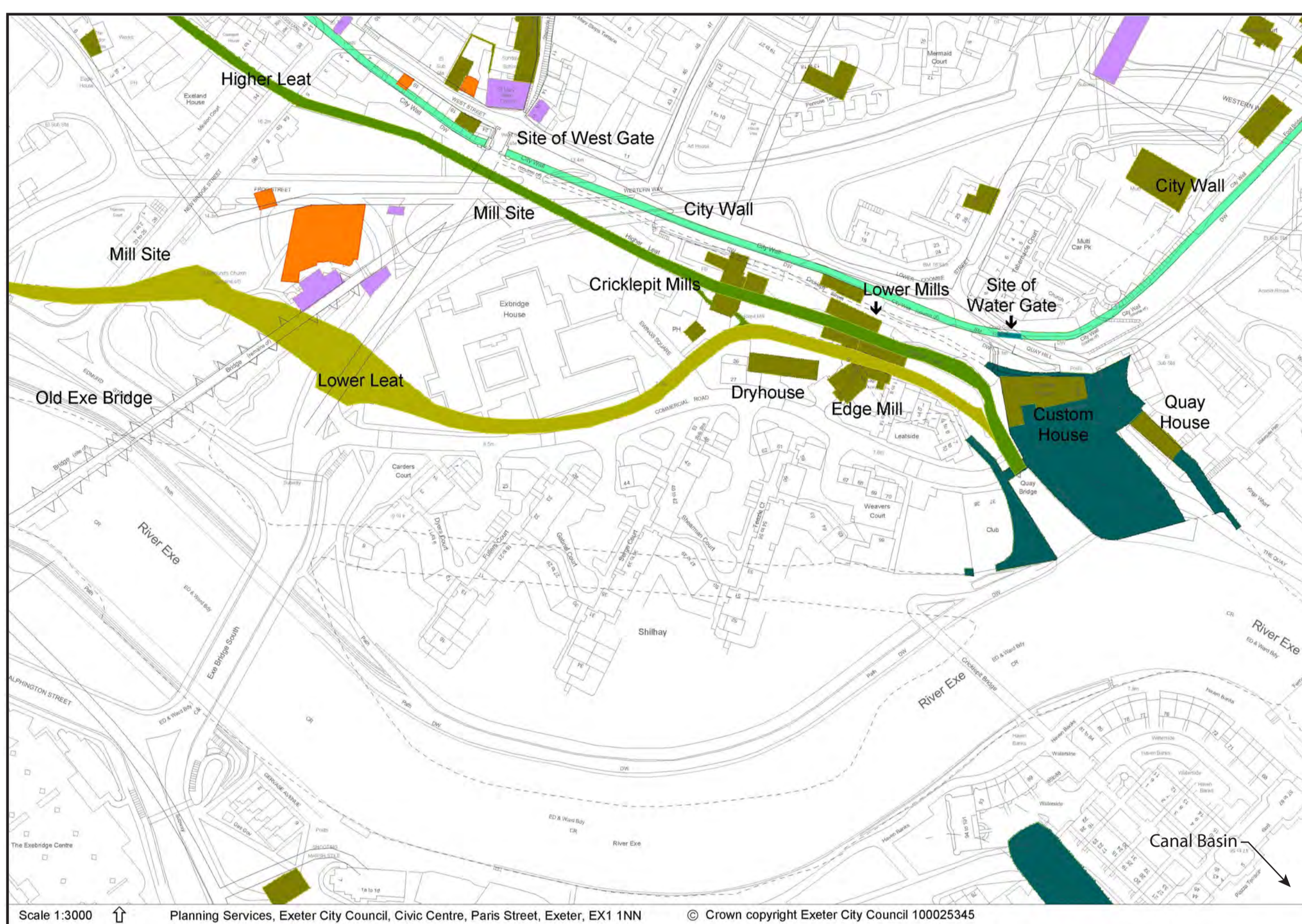
This covers the city's historic core and is housed in Exeter City Council's Planning Services at the Civic Centre. The rest of the city is covered by the Devon County HER, housed at County Hall.

The city HER was compiled in 1999 by Exeter Archaeology for Planning Services, with funding from English Heritage, and is one of a series of intensive HERs covering historic city centres across England. It is regularly updated, and contains a wealth of information on archaeological sites and historic buildings, covering all periods from the prehistoric to the 20th century. A series of map layers show the locations of past excavations for example, as well as reconstructed layouts of the city through its history. These layers are linked to a database of detailed background information.

A visit to a HER is useful to find out about your local area, past discoveries in the city or outside it, or the potential implications of a development proposal.



The Exeter city district showing the areas covered by the City Historic Environment Record (HER) and by the Devon HER.



Detail from the city HER showing the known layout of the waterside around 1750. Includes the leats, Cricklepit Mills, Lower Mills, Edge Mill and the Dry House (now the X Centre).



Example of the period reconstructions in the city HER: Roman legionary fortress underlying the city centre. Coloured shading represents known buildings, streets and the defences, projected features are shown in outline.



Example of the detailed information in the city HER: location of recording work (red - excavations, blue - buildings) and of buried remains (dark blue) of Roman legionary bath-house in front of the Cathedral and of military buildings under the Guildhall Centre. Inset: excavation of bath-house, 1972 (Exeter Archaeology).

## Contacts

For appointments to visit the City HER and for obtaining archaeological and historic building/conservation advice:  
 Archaeology Officer, Exeter City Council. Tel 01392 265224; email [andy.pye@exeter.gov.uk](mailto:andy.pye@exeter.gov.uk)  
 Conservation Officer, Exeter City Council. Tel 01392 265227; email [katharine.metcalfe@exeter.gov.uk](mailto:katharine.metcalfe@exeter.gov.uk)

For appointments to visit the County HER:  
 Historic Environment Service, Devon County Council.  
 Tel 01392 382246; email [archaeol@devon.gov.uk](mailto:archaeol@devon.gov.uk)



**Exeter City Council**